

Modern

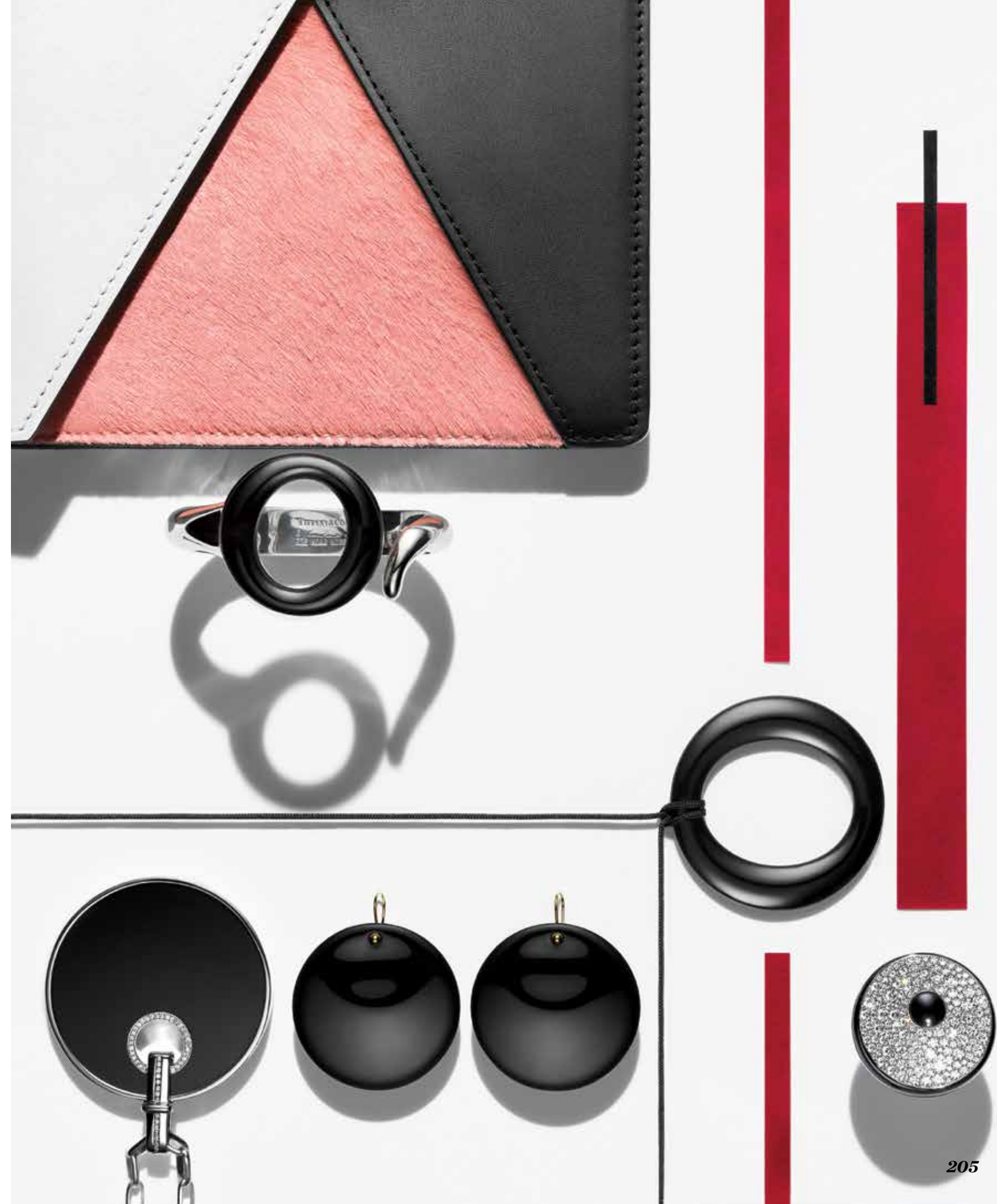
GEMOMETRY

WITH A NOD TOWARD GRAPHIC MODERNISTS LIKE SOL LEWITT, FALL'S MOST TRIUMPHANT PIECES MAKE A BOLD STATEMENT WITH VERVE AND EDGE.

PHOTOGRAPHS BY JOEL STRAS BY SHANNON ADDUCCI

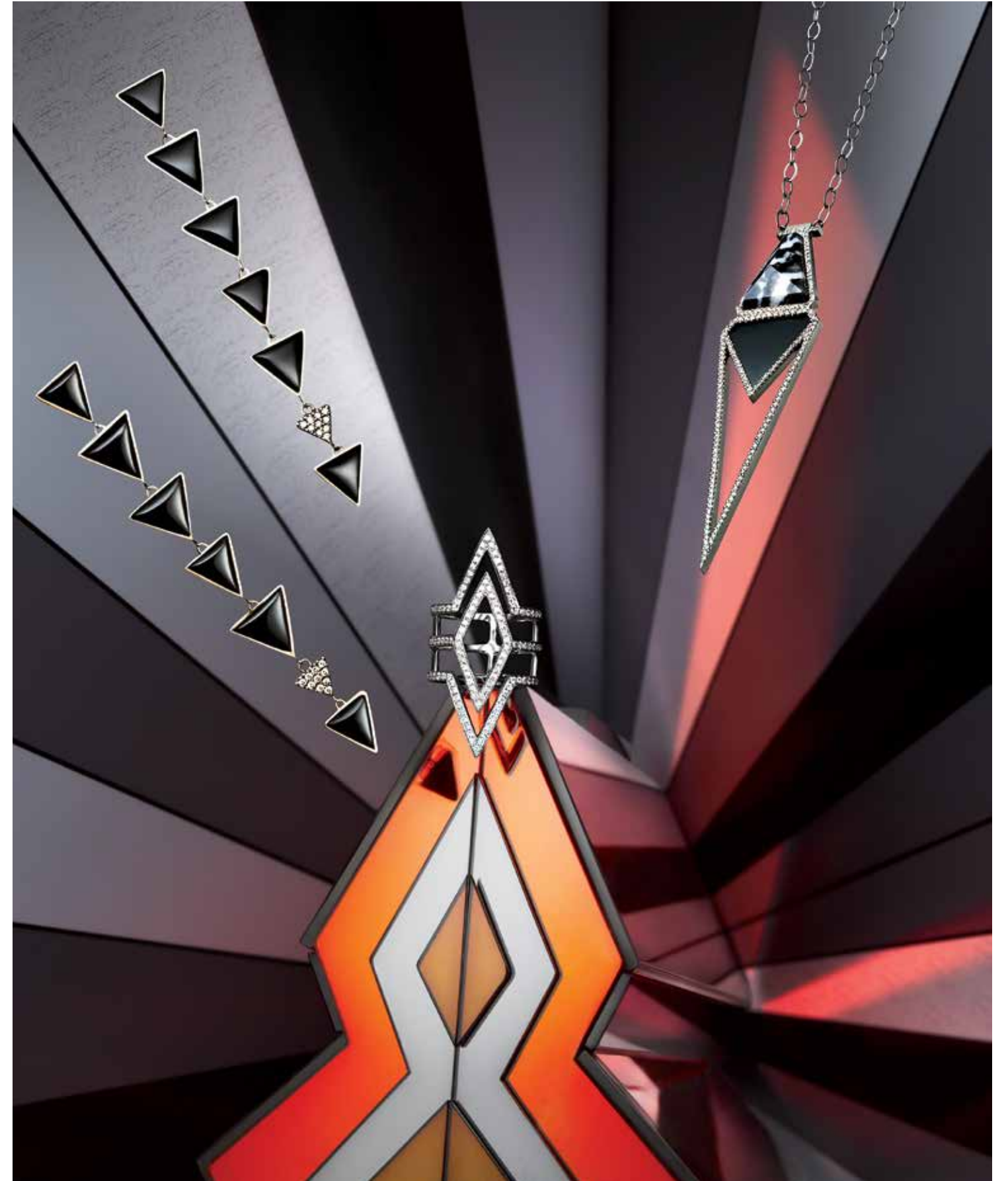
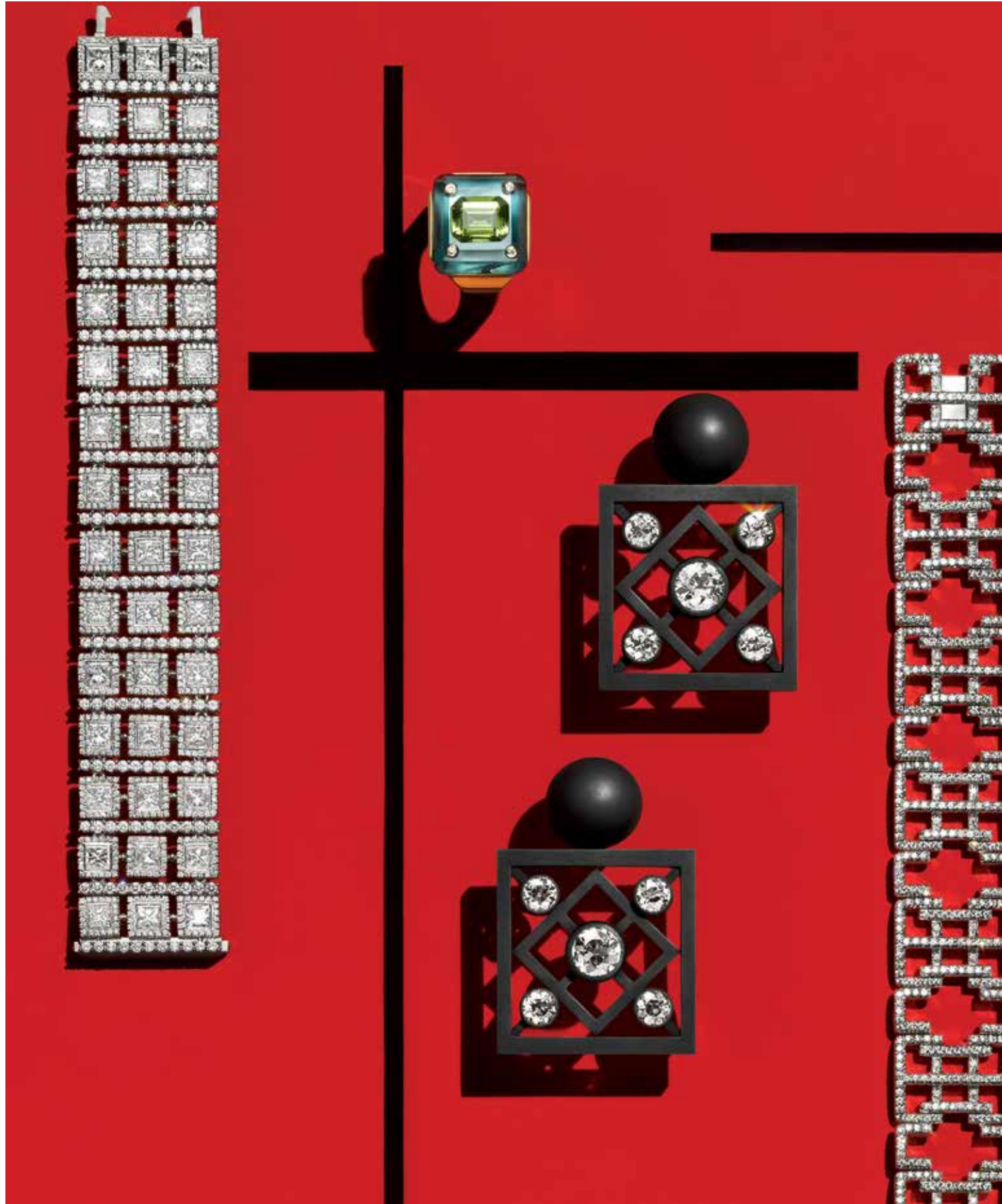


Sol LeWitt's modular Cubic Construction sculptures were deceptively simple. So are these geometric pieces: **CHANEL** Première watch, \$4,150. **SALVATORE FERRAGAMO** minaudière, \$1,650. **JEMMA WYNNE** Prive ring, \$4,830. **NICHOLAS KIRKWOOD** Hexagon flat, \$860. **PIERRE HARDY PARIS** cuff, \$595. Opposite: The spherical **DE GRISOGONO** Boule earrings, price upon request, play with dimension on a Piet Mondrian-esque, color-blocked **NARCISO RODRIGUEZ** suede clutch, \$1,295. For details, see page 218.



PROP STYLING BY PETER TRAN

LeWitt's *Cube Without a Cube* used straight lines to create the image of two cubes. Here, a similar illusion behind **CARTIER**'s Paris Nouvelle Vague ring, \$24,900. Opposite: Taking a page from LeWitt's chromatic *Wall Drawing #346*. **CÉLINE** pony-hair clutch, \$1,650. **ELSA PERETTI FOR TIFFANY & CO.** Sevillana cuff, \$1,575, pendant, \$225, and Round earrings, \$650. **LYNN BAN** onyx and diamond pendant, \$2,000. **DE GRISOGONO** Mistero ring, price upon request.



The neoplastic “Composition” works that Mondrian created are reimagined here—in diamonds. **KWIAT** Silhouette bracelet (left), \$234,000, and diamond bracelet (right), \$31,300. **KARA ROSS** blue topaz and peridot ring, \$7,500. **HEMNERLE** diamond and iron earrings, price upon request.

Mondrian color-blocking and sunburst shapes inspired by LeWitt’s *Wall Drawing #542*. Clockwise from left: **H.STERN** Ancient America earrings, \$2,800. **ANITA KO** diamond ring, \$5,985. **MONIQUE PÉAN** zebra agate pendant, \$18,095. **RAUWOLF** Shalimar clutch, \$2,360.